



CAR SEAT AWARENESS MONTH

REAR-FACING STATS

#REMEMBERTHEFIVE



BABIES 0-24 MONTHS OLD ARE

5x

SAFER REAR-FACING THAN FORWARD-FACING

WHEN REAR-FACING A CHILD IS

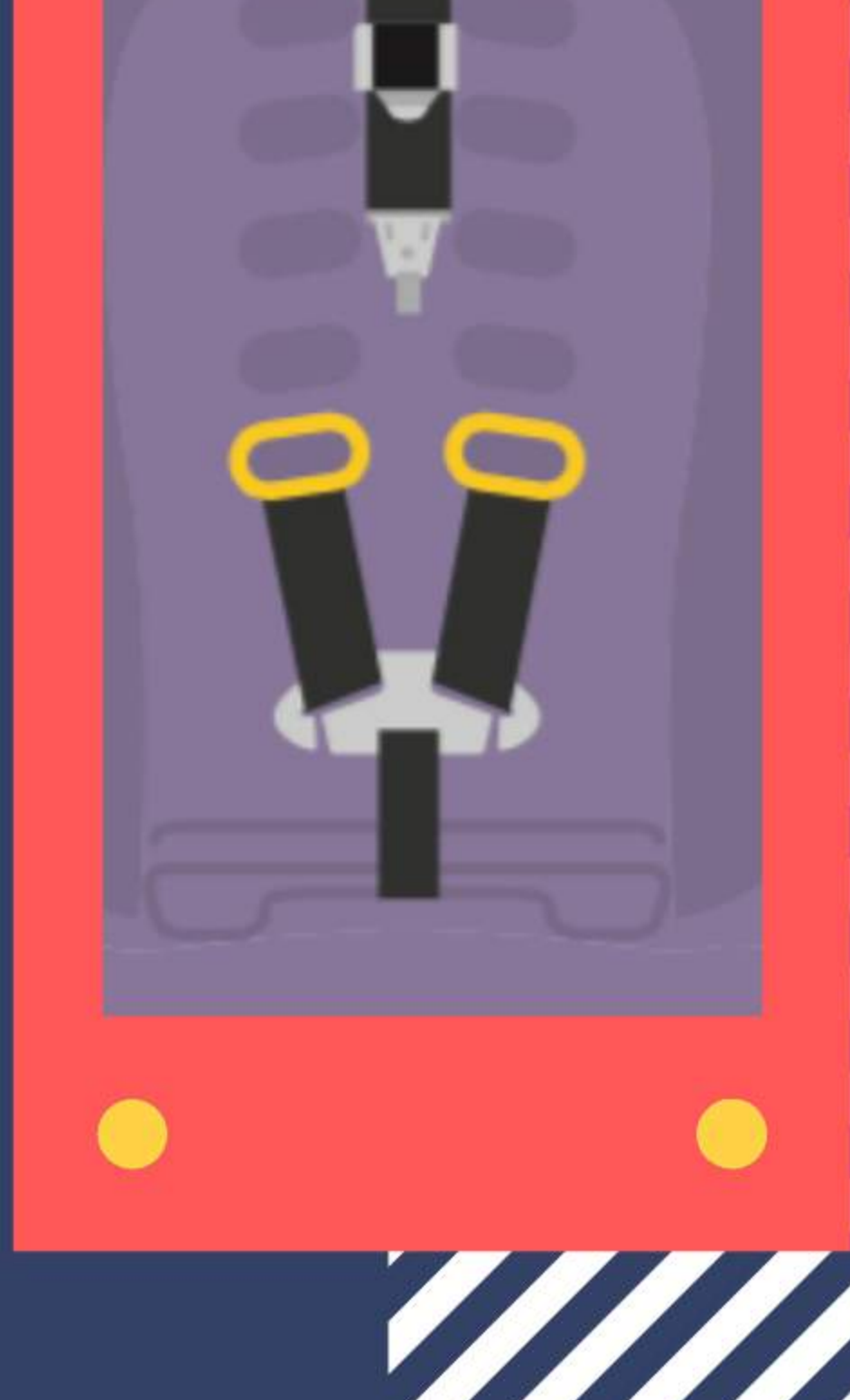


LESS LIKELY TO DIE OR HAVE A SERIOUS INJURY

1

shoulder harness

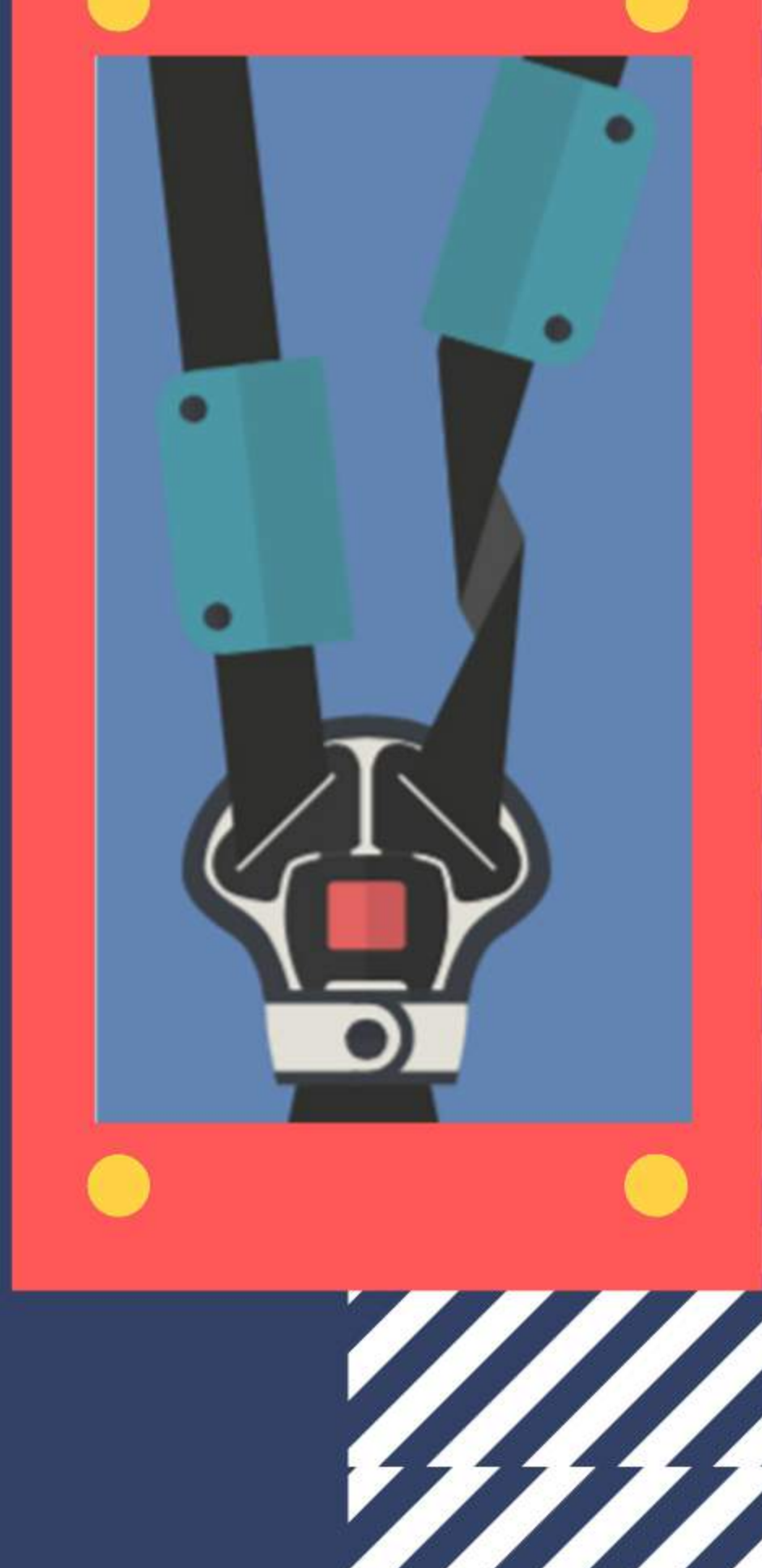
should be **AT** or **BELOW** shoulders



2

flat straps

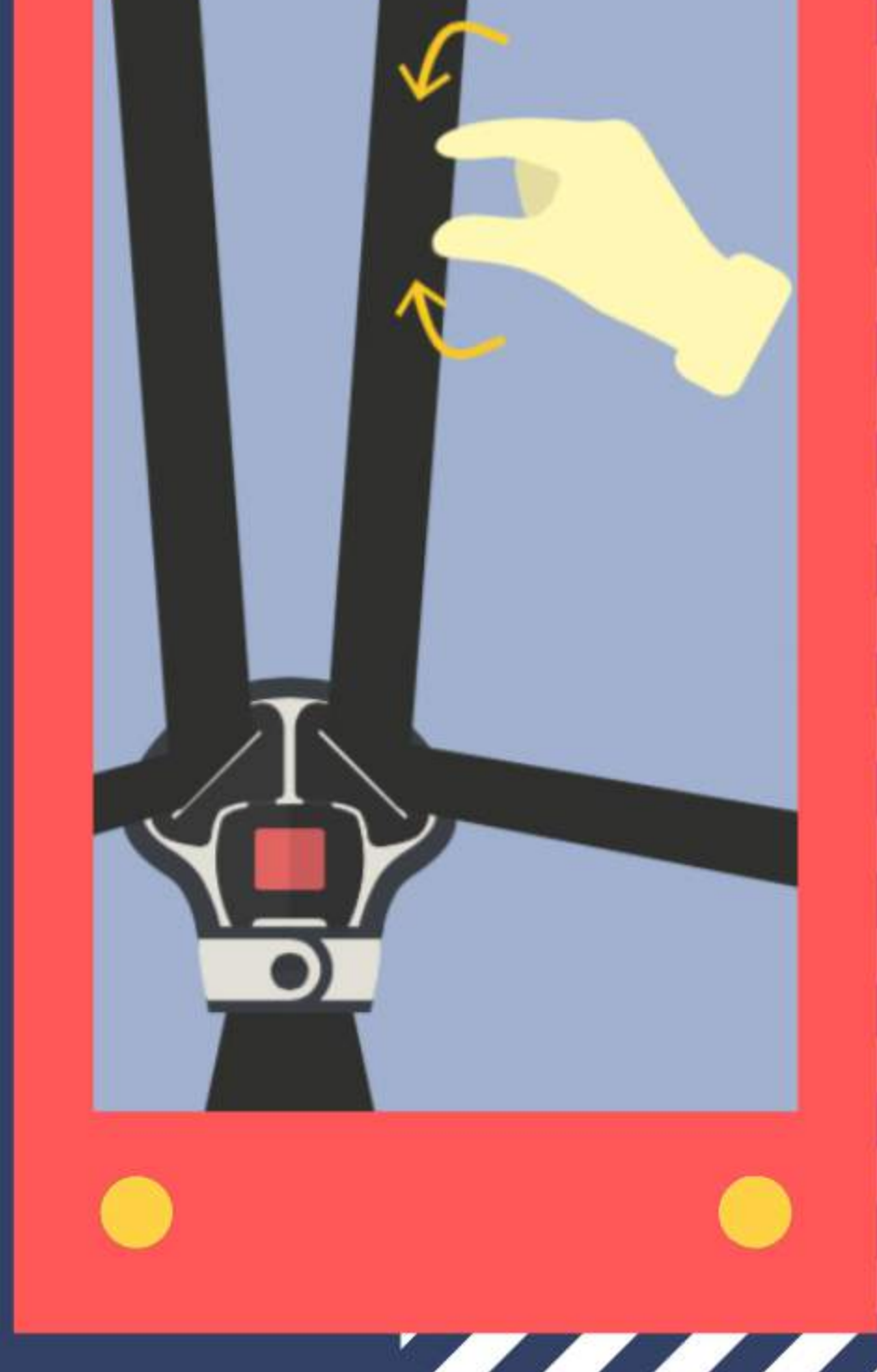
straps lie **FLAT** without **twisting** or **sagging**



3

pinch test

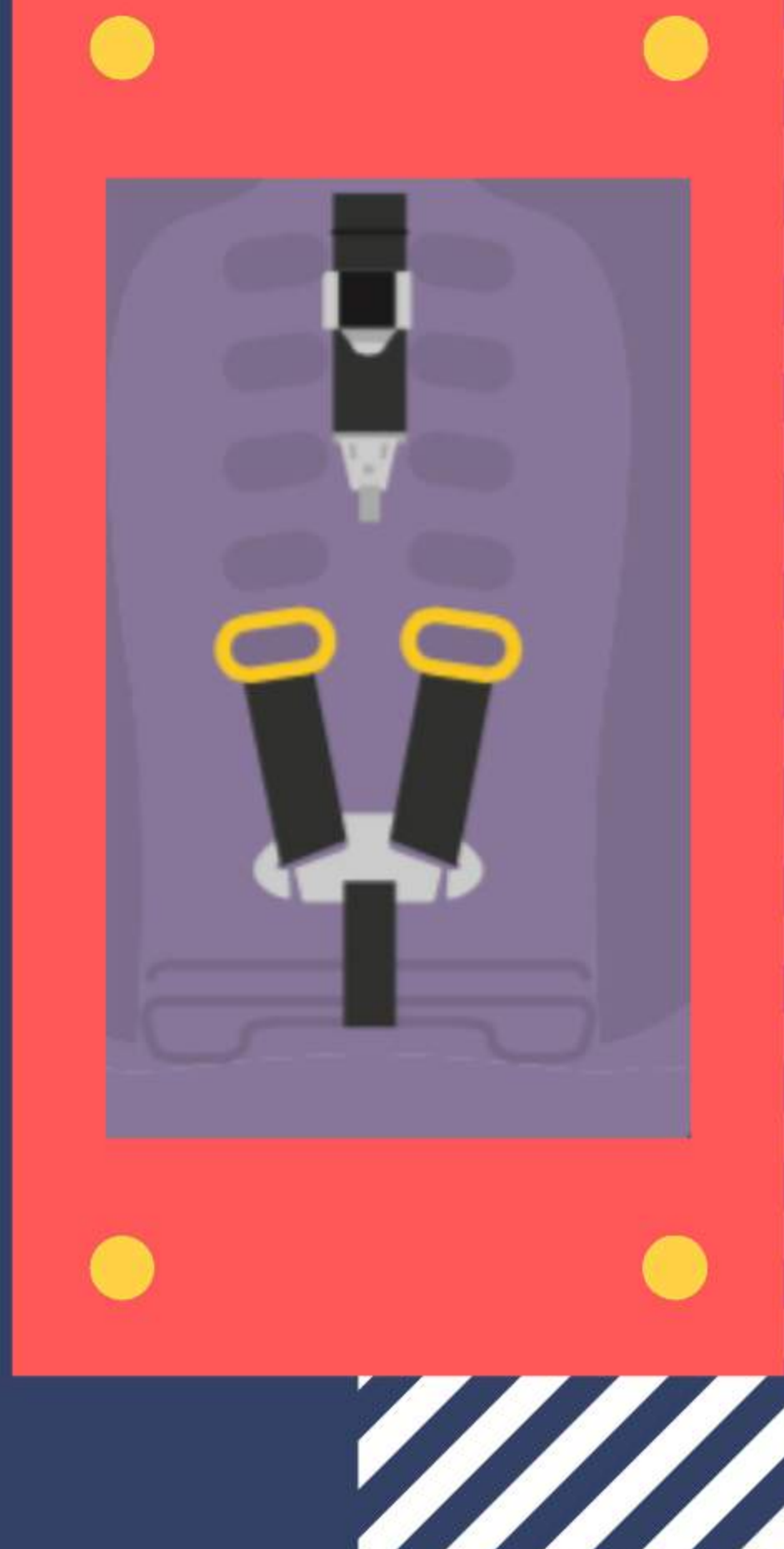
you should **not be able to pinch** the straps



4

chest clip

EVEN with armpits



5

head

head must be **AT LEAST 1 INCH BELOW** the top of the car seat



?

recommendations

Keep your child in a rear-facing seat as long as the child fits within the manufacturer's height and weight requirements.



SMITH SHANKLIN SOSA
PERSONAL INJURY TRIAL LAWYERS